

## Tyntesfield Audit, 8 December 2025

What a strange year. It was very hard to believe this Audit was done in mid December. Not only were there many fungi (60 species) to be found, but many of them were in prime condition, having clearly developed over the previous few days. The species found also included some that are normally only seen in summer /autumn, eg a Stinkhorn (*Phallus impudicus*) and *Entoloma hebes*. The lack of frosts and general warmth has had a strong effect.

In contrast, there were several key fungi that were not found. On the Chapel Lawn there was no sign of any Earthtongues, including the rare *Microglossum truncatum*. Similarly, the lower lawns were bereft of Waxcaps. There were no Golden Waxcaps (*Hygrocybe chlorophana*) on the eastern lawn, a site where these are usually abundant.

However, two species new to Tyntesfield were identified - *Aleurodiscus wakefieldiae* and *Galerina pallida*.

After the morning's activities, we joined the many visitors in the Barn Cafe to enjoy our now traditional Christmas soup - and very good it was too!

A list of all the fungi identified is shown below, along with photographs and notes about some of the more interesting species.

|  |                    |                                  |                      |
|--|--------------------|----------------------------------|----------------------|
| <i>Agaricus phaeolepidotus</i>         | Dusky Mushroom     | <i>Lactarius blennius</i>        | Beech Milkcap        |
| <i>Aleurodiscus wakefieldiae</i>       | Pink Disco         | <i>Lactarius semisanguifluus</i> |                      |
| <i>Apioperdon pyriforme</i>            | Stump Puffball     | <i>Laetiporus sulphureus</i>     | Chicken of the Woods |
| <i>Auricularia auricula-judae</i>      | Jelly Ear          | <i>Lepiota tomentella</i>        |                      |
| <i>Cerioporus squamosus</i>            | Dryad's Saddle     | <i>Lycogala epidendrum</i>       | Wolf's Milk          |
| <i>Clavulina cinerea</i>               | Grey Coral         | <i>Mucilago crustacea</i>        | Dog Sick Slime Mould |
| <i>Clavulina coralloides</i>           | Crested Coral      | <i>Mycena clavularis</i>         |                      |
| <i>Clavulina rugosa</i>                | Wrinkled Club      | <i>Mycena flavoalba</i>          | Ivory Bonnet         |
| <i>Clavulinopsis corniculata</i>       | Meadow Coral       | <i>Mycena haematopus</i>         | Burgundydrop Bonnet  |
| <i>Clitocybe fragrans</i>              | Fragrant Funnel    | <i>Mycena pseudocorticola</i>    | Steely Bonnet        |
| <i>Collybia nuda</i>                   | Wood Blewit        | <i>Mycena purpureofusca</i>      | Purple-edge Bonnet   |
| <i>Coprinellus micaceus</i>            | Glistening Inkcap  | <i>Mycena rosea</i>              | Rosy Bonnet          |
| <i>Crepidotus applanatus</i>           | Flat Oysterling    | <i>Mycena tenerrima</i>          | Frosty Bonnet        |
| <i>Crepidotus mollis</i>               | Peeling Oysterling | <i>Myxarium nucleatum</i>        | Crystal Brain        |
| <i>Cuphophyllus pratensis</i>          | Meadow Waxcap      | <i>Neobulgaria pura</i>          | Beech Jellydisc      |
| <i>Cuphophyllus virgineus</i>          | Snowy Waxcap       | <i>Panellus stipticus</i>        | Bitter Oysterling    |
| <i>Cyanosporus subcaesius</i>          | Blueing Bracket    | <i>Parasola conopila</i>         | Conical Brittlestem  |
| <i>Daedaleopsis confragosa</i>         | Blushing Bracket   | <i>Parasola plicatilis</i>       | Pleated Parachute    |
| <i>Daldinia concentrica</i>            | Cramp Balls        | <i>Phallus impudicus</i>         | Stinkhorn            |
| <i>Entoloma hebes</i>                  | Pimple Pinkgill    | <i>Pleurotus cornucopiae</i>     | Branching Oyster     |
| <i>Exidia thuretiana</i>               | White Brain        | <i>Pluteus cervinus</i>          | Deer Shield          |
| <i>Fomitopsis betulina</i>             | Birch Polypore     | <i>Rhodocollybia butyracea</i>   | Butter Cap           |
| <i>Galerina pallida</i>                |                    | <i>Rhopographis filicinis</i>    | Bracken Map          |
| <i>Geastrum michelianum</i>            | Collared Earthstar | <i>Stereum hirsutum</i>          | Hairy Curtaincrust   |
| <i>Gymnopilus penetrans</i>            | Common Rustgill    | <i>Stropharia caerulea</i>       | Blue Roundhead       |
| <i>Hygrocybe ceracea</i>               | Butter Waxcap      | <i>Trametes versicolor</i>       | Turkeytail           |
| <i>Hymenopellis radicata</i>           | Rooting Shank      | <i>Tremella mesenterica</i>      | Yellow Brain         |
| <i>Hypholoma fasciculare</i>           | Sulphur Tuft       | <i>Tubaria furfuracea</i>        | Scurfy Twiglet       |
| <i>Inocybe geophylla</i>               | White Fibrecap     | <i>Xylaria cinerea</i>           |                      |
| <i>Inocybe geophylla var. lilacina</i> | Lilac Fibrecap     | <i>Xylaria hypoxylon</i>         | Candlesnuff Fungus   |
| <i>Kuehneromyces mutabilis</i>         | Sheathed Woodtuft  |                                  |                      |

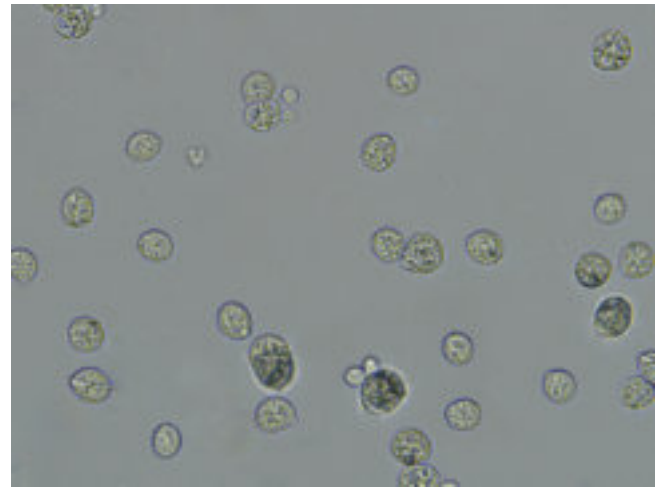
*Phallus impudicus* (Stinkhorn): this beautiful example was found in Warren Plantation, its strong fetid odour filled the local area. Note the fly sitting on the top. Flies are responsible for the spread of the fungus' spores.



*Gastrum michelianum* (Collared Earthstar): Examples were found at several different sites in Plantation.



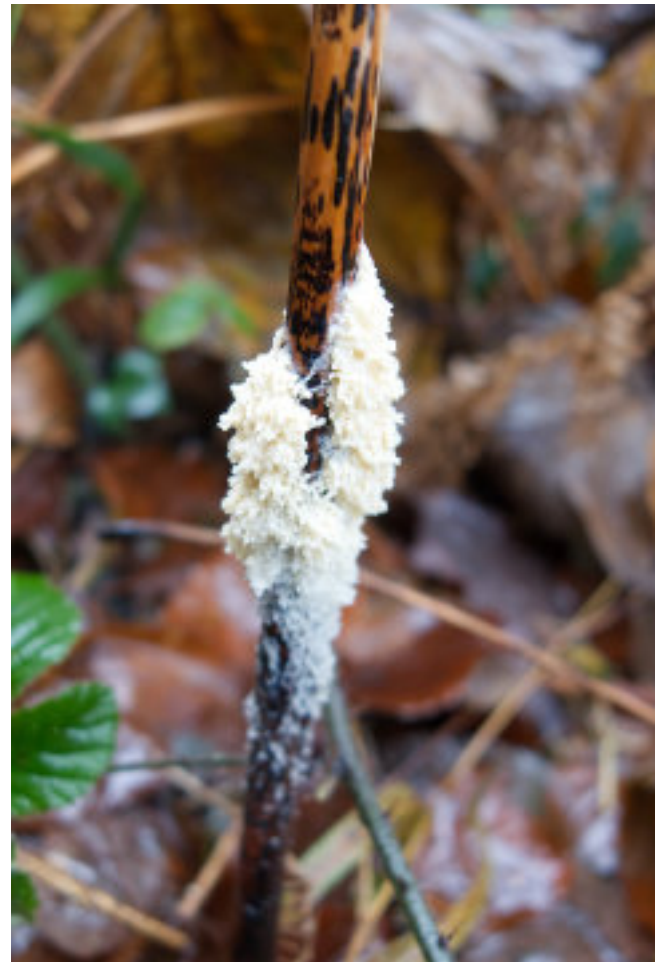
***Tremella mesenterica*** (Yellow Brain): Several specimens were seen on a pile of logs in Plantation. Although the host of this example could not be identified (it is a parasite of *Peniophora*, a common woodland fungus), it produced many mature sexual spores when allowed to sit on a glass slide. The actual fungus is illustrated below (left) with the large globose spores (8-13u) shown on the right..



***Agaricus phaeolepidotus*** (Dusky Mushroom): several fine specimens were found close to the upper track in Plantation. Although it resembles *A. moelleri*, it is distinguished from it by showing only a slight yellowing of the stem when cut and a barely detectable smell of phenol. In contrast, *A. moelleri*, which has also been seen at Tyntesfield, stains bright yellow and has a very strong smell.



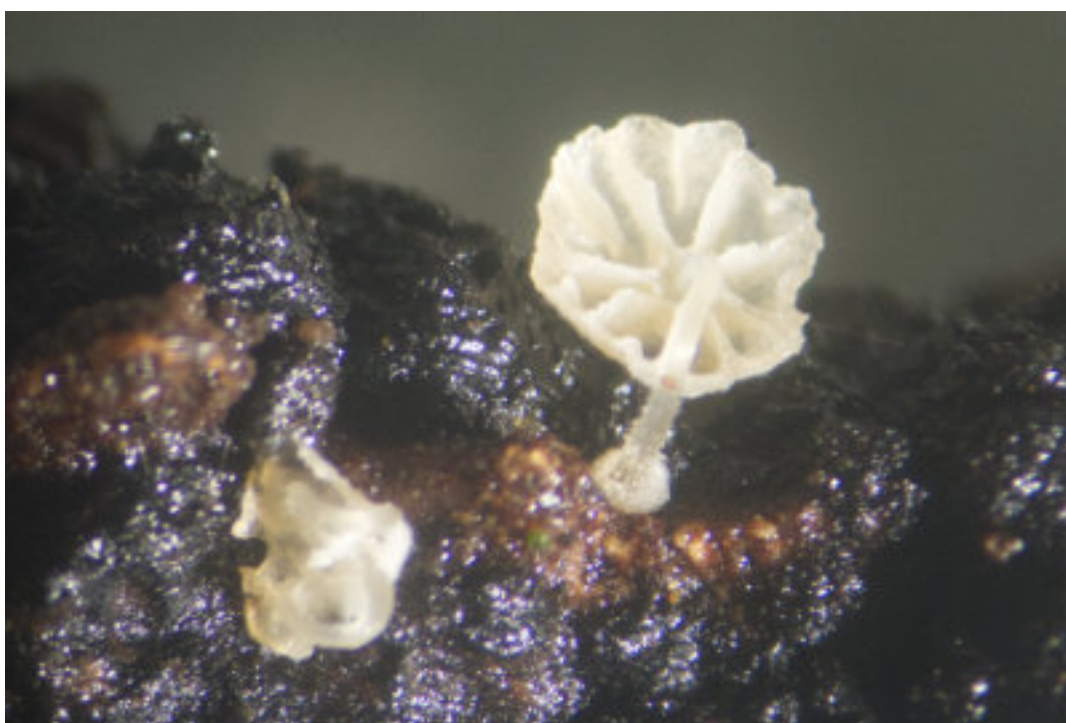
***Mucilago crustacea*** (Dog's Vomit Slime Mould): this large example was found growing on a dead stem of bracken, which was heavily infected with *Rhopoglyphus filicinus* (the large brown lesions on the stem), in Warren Plantation.



***Coprinellus micaceus*** (Glistening Inkcap): a very common species on the Estate. Illustrated below is just one of several clusters of young specimens seen around felled logs in Plantation.



***Mycena tenerrima*** (Frosty Bonnet): a very small species growing on rotting logs. Notable features were its size (1-2mm), the frosty crystalline cap surface, a crystalline basal disc and restricted gill development..



Two young newly emerged fungi - in perfect condition. *Mycena rosea* (Rosy Bonnet) (left), was seen under beech in Plantation, and *Collybia nuda* (Wood Blewit), was in grass in Paradise.



***Myxarium nucleatum*** (Crystal Brain): one of two related species, both present at Tyntesfield. *Myxarium nucleatum* can be distinguished from *Exidia thuretiana* (White Brain) by the presence of white crystals in the white/grey jelly-like fruitbody - see below.

