

Tyntesfield Audit, 20 November 2025

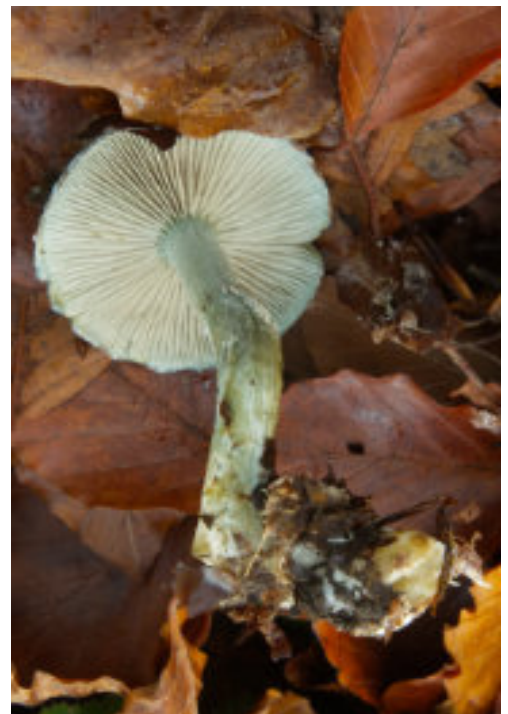
Over 60 species were identified. Most of these were in the woodlands. There were a few grassland fungi on the Chapel Lawns but we found none of the Waxcap fungi that normally occur on the South Lawns in November. A notable feature of the Chapel Lawn was the large number of fruiting bodies of *Entoloma atromadidum*. This contrasted with the complete absence of *Microglossum truncatum*, a rare Earthtongue, that is normally present in profusion in the mossy slopes nearby.

A list of all the fungi identified is shown below, along with photographs and notes about some of the other more interesting species.

Also note the discovery of *Hericeum cirrhatum* in Sidelands (see below)

<i>Agaricus phaeolepidotus</i>	<i>Geastrum britannicum</i>	<i>Mycena epipterygia</i>
<i>Apioperdon pyriforme</i>	<i>Gymnopilus penetrans</i>	<i>Mycena filopes</i>
<i>Atheniella flavoalba</i>	<i>Helvella crispa</i>	<i>Mycena rosea</i>
<i>Bjerkandera adusta</i>	<i>Hygrocybe chlorophana</i>	<i>Panellus stipticus</i>
<i>Calycina citrina</i>	<i>Hygrocybe conica</i>	<i>Parasola conopila</i>
<i>Clavulina cinerea</i>	<i>Hygrocybe punicea</i>	<i>Pholiota squarrosa</i>
<i>Clavulina coralloides</i>	<i>Hypholoma fasciculare</i>	<i>Pluteus cervinus</i>
<i>Clavulina rugosa</i>	<i>Infundibulicybe geotropia</i>	<i>Psathyrella piluliformis</i>
<i>Clavulinopsis helvola</i>	<i>Inocybe geophylla</i>	<i>Rhodocollybia butyracea</i>
<i>Clavulinopsis laeticolor</i>	<i>Inocybe margaritipora</i>	<i>Russula nigricans</i>
<i>Clitocybe fragrans</i>	<i>Lachnum niveum</i>	<i>Schizophyllum commune</i>
<i>Collybia nuda</i>	<i>Lactarius blennius</i>	<i>Stereum hirsutum</i>
<i>Coprinellus disseminatus</i>	<i>Lactarius fulvissimus</i>	<i>Stropharia caerulea</i>
<i>Coprinellus micaceus</i>	<i>Lactarius pyrogalus</i>	<i>Trametes hirsuta</i>
<i>Crepidotus mollis</i>	<i>Lactarius semisanguifluus</i>	<i>Trametes versicolor</i>
<i>Cuphophyllus pratensis</i>	<i>Laetiporus sulphureus</i>	<i>Xerocomellus pruinatus</i>
<i>Cuphophyllus virgineus</i>	<i>Lycoperdon excipuliforme</i>	<i>Xylaria hypoxylon</i>
<i>Daldinia concentrica</i>	<i>Marasmius oreades</i>	<i>Xylaria cinerea</i>
<i>Entoloma atromadidum</i>	<i>Melanoleuca polioleuca</i>	<i>Xylaria longipes</i>
<i>Exidia thuretiana</i>	<i>Melanoleuca cognata</i>	
<i>Ganoderma adpersum</i>	<i>Mucilago crustacea</i>	

Stropharia caerulea (Blue Roundhead): several examples were seen in Farm Plantation under a large beech tree. (



Hypholoma fasciculare (Sulphur Tuft) (left) and *Coprinellus micaceus* (Glistening Inkcap) (right): two of the commoner species that are regularly found on log piles in Plantation.



Panellus stipticus (Bitter Oysterling): many such colonies were seen in log piles in Plantation..



Xylaria longipes (Dead Moll's Fingers): a species that is defined by the distinct stalk of the fruiting body..



Xylaria cinerea this rare fungus had struggled to develop during the dry summer, but the recent rains had allowed it to develop more fully..



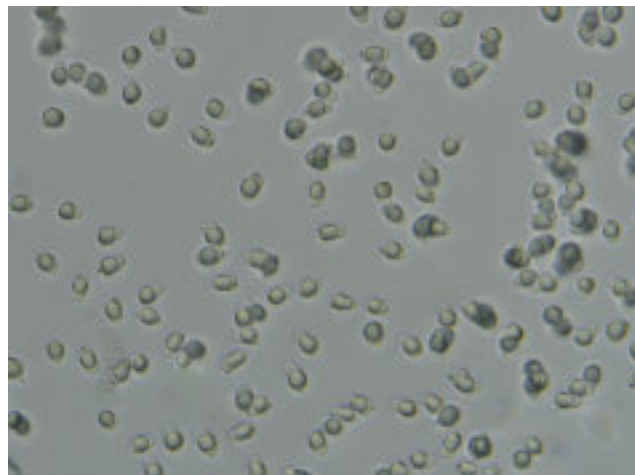
Trametes hirsuta and *Tramete versicolor* : two closely related bracket fungi growing together on a felled ash tree..



Hygrocybe punicea (Scarlet Waxcap): a beautiful example seen on the Chapel Lawn. It was one of the few Waxcaps seen during the Audit..



Clavulinopsis laeticolor (Handsome Club): large examples were found on the Chapel Lawns. Identification relied on examining the size and shape of its reproductive spores.



Lycoperdon excipuliforme (Pestle Puffball): several fine examples were seen on the Chapel Lawns..



Lactarius fulvissimus (Tawny Milk Cap): a few examples of this brightly coloured fungus were found on the garden lawns, but far fewer than normally expected at this time of the year.



Infundibulicybe geotropa (Trooping Funnel): one of the larger fungi on the Estate. These examples were part of a “ring” in grass in Paradise.



Hericeum cirrhatum (Tiered Tooth Fungus): following notification by a member of the public, this spectacular species was located in Sidelands Wood. This very rare species occurs on dead hardwood trees in old (mainly deciduous) woodlands. It has also been reported from other sites in southern England, notably the New Forest. Individual sections of the fruitbody are 5 to 10cm across, but occur, as here, in tiered groups covering a large area.

