

Tyntesfield Audit, 20 March 2024

Another quiet month, with only a few fungi appearing on dead wood and on lawns below the house. The most interesting fungus was *Strobilurus tenacellus*. This is always associated with pine cones, though here it appeared in grass. A full structural analysis is shown below. The two winter stalwarts (*Gastrum britannicum* and *Sarcoscypha austriaca*) keep fruiting. The number of fruiting bodies of both species had increased, clearly indicating that this fungus can produce new sporophores throughout the winter. Despite careful microscopic analysis, all the Scarlet Elf cups were *S. austriaca*. We will keep looking for the rarer Crimson version (*Sarcoscypha coccinea*).

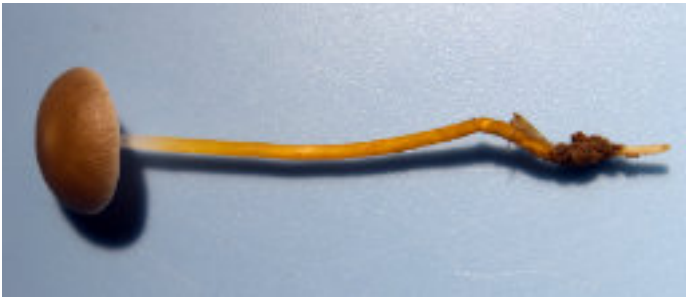
A list of species is shown below, along with illustrations of the more interesting species of the Audit.

Auricularia auricula-judae
Byssomerulius corium
Daldinia concentrica
Entoloma vernum
Ganoderma adspersum
Gastrum britannicum
Hypholoma fasciculare
Hypoxylon fragiforme
Kretzschmaria deusta
Melampsora populnea
Panaeolus acuminatus
Panaeolus fimicola
Peniophora limitata
Peziza micropus
Pluteus cervinus

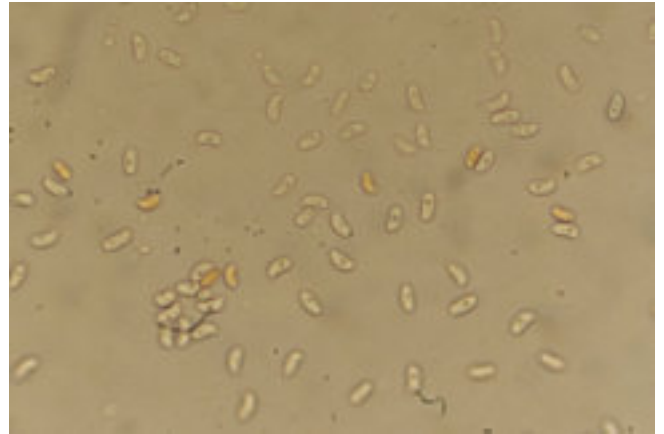
Puccinia buxi
Ramularia ari
Reticularia lycoperdon
Rickenella swartzii
Sarcoscypha austriaca
Stereum subtomentosum
Strobilurus tenacellus
Tremella mesenterica
Tubaria furfuracea
Xylaria carpophila



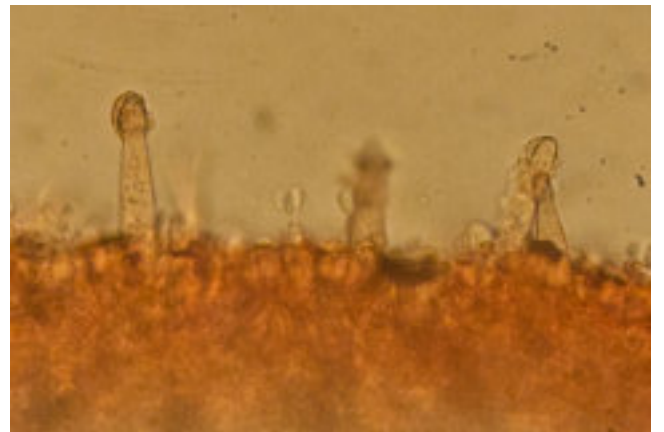
***Strobilurus tenacellus* (Pinecone Cap):** found in grass beside the entrance road near Farm Plantation. This fungus has a brown cap, pure white gills and a stem that is white above and pale brown below. On examination, it was found that the spores were allantoid (bean-shaped) and there were many large cystidia with droplets/deposits at their tips. Identification as *S. tenacellus* was thus confirmed. This species is normally seen on conifer cones, hence its common name. One must assume the cone in this case was hidden in the grass.



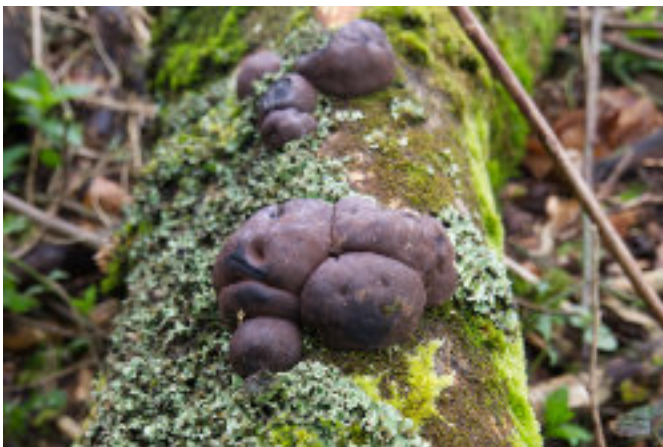
Allantoid spores



Gill edge cystidia



***Daldinia concentrica* (King Alfred's Cakes):** a common fungus on fallen ash. These young examples were seen on the log pile in Plantation.



***Reticularia lycoperdon* (False Puffball):** a young example (2cm) of this myxomycete found on bare wood in Plantation



Entoloma vernum: a spring fruiting Pinkgill, growing in the lawns under cedar. Another example of the grassland fungi that can be seen in this area.



***Calocybe gambosa* (St George's Mushroom)**: a real indicator of the mild winter. This bold white fungus is normally found fruiting mid to end of April, hence its common name.



Panaeolus acuminatus (left) and ***Panaeolus fimicola*** (right): seen growing together on the South Lawn



***Xylaria carpophila* (Beechmast Candlesnuff)**: a common, but rarely seen, fungus growing on beechmast



A true sign of Spring: a bumblebee enjoying the delightful Crocuses on the South Lawn



***Halyzia sedecimguttata* (Orange Ladybird):** an unusual Ladybird that eats the spores of Powdery Mildew Fungi



***Arrhenia retiruga* (Small Moss Oysterling):** only 1cm across, this unusual fungus is restricted to growing on mosses. This was found earlier in the year, but was missed from a previous report.

