

## Tyntesfield Audit 27 September 2017

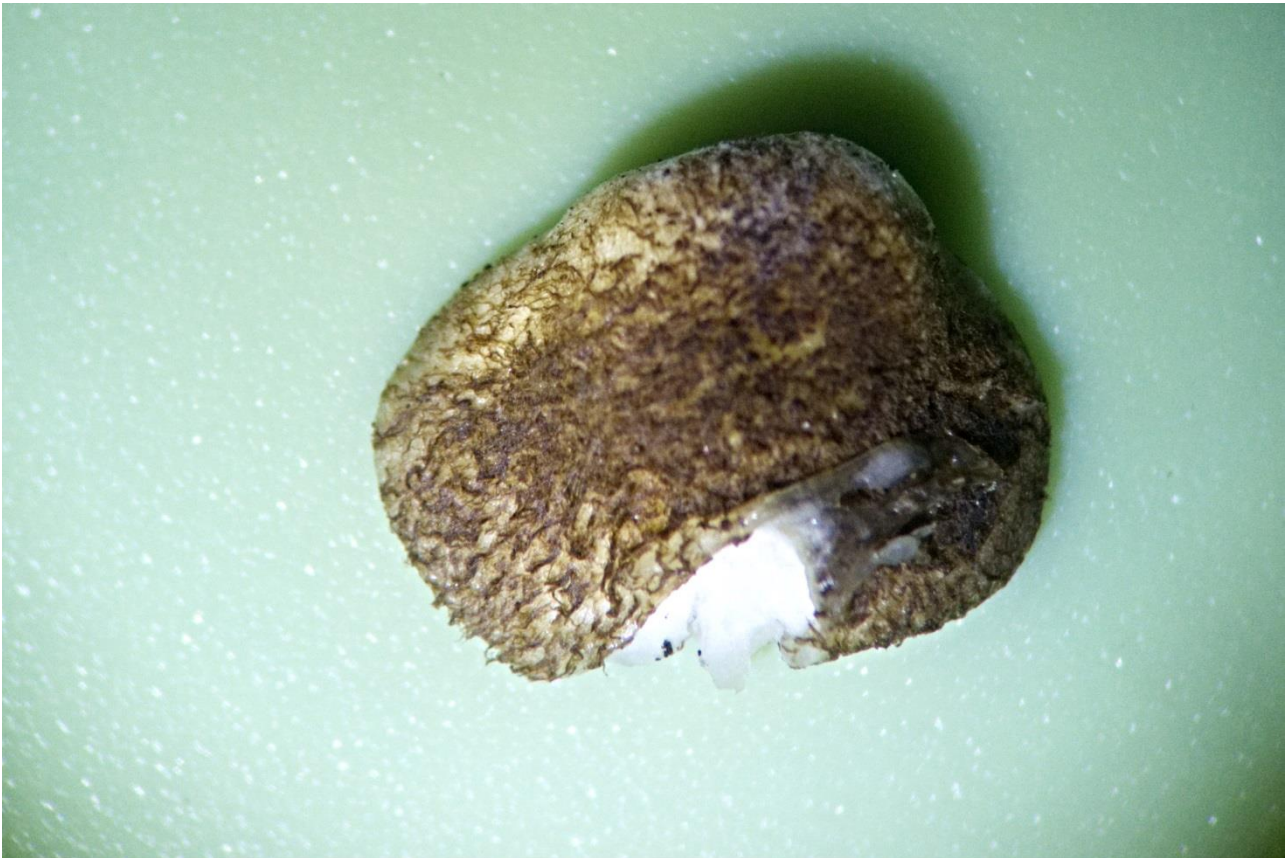
As a result of August holidays etc most of the regular team missed this Audit, which produced a long list of species, including several new to Tyntesfield : *Lyophyllum paelochroum*, *Rhodocybe gemina*, *Cortinarius uliginosus* and *Lepiota felina*.

Another new species was *Crepidotus calolepis*. This species is closely related to the common *C. mollis*, but has recently been acknowledged as a distinct species. It can be recognised by its peeled pellicle (like *C. mollis*), but is covered with minute dark-brown scales (see images below).

### List of Fungi

<i>Agaricus altipes</i>	<b><i>Lepiota felina</i></b>
<i>Agaricus augustus</i>	<i>Lepiota pseudolilacea</i>
<i>Agaricus moelleri</i>	<i>Lepista flaccida</i>
<i>Agaricus porphyizon</i>	<i>Lepista nuda</i>
<i>Agrocybe cylindracea</i>	<i>Lycoperdon perlatum</i>
<i>Bolbitius titubans</i>	<i>Lycoperdon pratense</i>
<i>Chlorophyllum rhacodes</i>	<i>Lycoperdon pyriforme</i>
<i>Clitocybe fragrans</i>	<i>Lyophyllum decastes</i>
<i>Clitocybe gibba</i>	<i>Lyophyllum paelochroum</i>
<i>Clitocybe phaeophthalma</i>	<i>Melanoleuca brevipes</i>
<i>Clitocybe rivulosa</i>	<i>Melanoleuca polioleuca</i>
<i>Clitopilus prunulus</i>	<i>Mycena aetites</i>
<i>Conocybe macrocephala</i>	<i>Mycena arcangeliana</i>
<i>Conocybe velata</i>	<i>Mycena capillaripes</i>
<i>Coprinellus disseminatus</i>	<i>Mycena inclinata</i>
<i>Coprinellus micaceus</i>	<i>Mycena leptcephala</i>
<i>Cortinarius anomalus</i> agg.	<i>Mycena olida</i>
<i>Cortinarius uliginosus</i>	<i>Mycena pelianthina</i>
<i>Crepidotus calolepis</i>	<i>Mycena pura</i>
<i>Cystolepiota seminuda</i>	<i>Mycena rosea</i>
<i>Dermoloma cuneifolium</i>	<i>Mycena vitilis</i>
<i>Entoloma exile</i>	<i>Parasola leiocephala</i>
<i>Entoloma hebes</i>	<i>Pluteus cervinus</i>
<i>Entoloma infula</i>	<i>Pluteus chrysophaeus</i>
<i>Entoloma rhombisporum</i> var <i>floccipes</i>	<i>Pluteus luctuosus</i>
<i>Entoloma sericatum</i>	<i>Psathyrella prona</i>
<i>Entoloma sodale</i>	<i>Psathyrella spadiceogrisea</i>
<i>Galerina marginata</i>	<i>Rhodocollybia butyracea</i>
<i>Galerina vittiformis</i>	<i>Rhodocybe gemina</i>
<i>Gliophorus psittacinus</i>	<i>Rickenella fibula</i>
<i>Gymnopilus penetrans</i>	<i>Ripartites tricholoma</i>
<i>Gymnopus dryophilus</i>	<i>Rugosomyces carneus</i>
<i>Hygrocybe chlorophana</i>	<i>Russula cuprea</i>
<i>Hygrocybe insipida</i>	<i>Russula odorata</i>
<i>Inocybe duriuscula</i>	<i>Russula parazurea</i>
<i>Inocybe geophylla</i>	<i>Russula sanguinaria</i>
<i>Laccaria laccata</i>	<i>Suillus collinitus</i>
<i>Lactarius semisanguifluus</i>	<i>Tubaria furfuracea</i>
<i>Lepiota cristata</i>	<i>Xerocomellus chrysenteron</i>

*Crepidotus calolepis*, showing the peeled back pellicle (skin) (lower right)



*Crepidotus calolepis*, showing dark brown scales on the upper surface.

