

Foray over coastal pastures and local woods near Clevedon (5 Sept 2020)

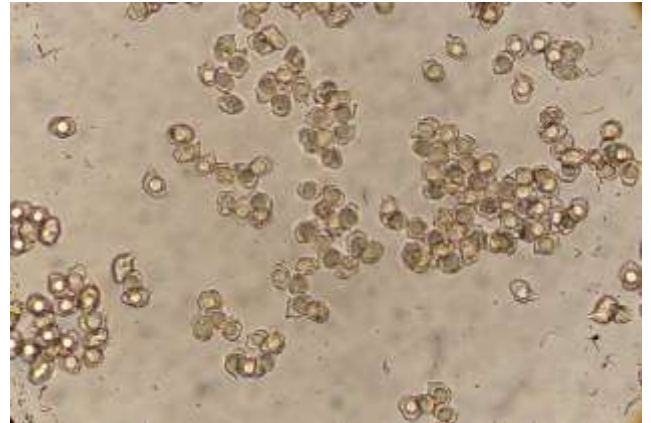
***Agaricus urinascens*.** A species related to the common Field Mushroom, but notable for its very large size. Even the young unexpanded versions were at least 15 cm across. Young versions have very large cogwheel rings.



***Entoloma chalybaeum*.** Two Pink Gills were common across the grassland. One had entire dark edges to its gills - *E. chalybaeum*



Entoloma griseocyaneum. A brown species with a rough cap was also common in the grassland.



Agaricus phaeolepidotus. This species resembles *A. moelleri*, but it has brown patches on the cap, and the lower stem does not colour bright yellow when cut or damaged. It appears to be quite common in woodlands in North Somerset.

