

Tyntesfield Audit 21 August 2019



After several days of very heavy rain 10 optimistic mycologists arrived at Tyntesfield. They were not to be disappointed. More than 70 species were seen, many illustrating the great diversity of fungal structures that can be found on the Estate.

Amongst the 10 people present were some with additional expertise, including one with an ability to find and identify some very interesting insects. The most terrifying was a Scorpion Spider (*Pselaphochernes scorpoides*) (left PB).

Although less visually alarming, one fungus was particularly common and extremely dangerous – the Death Cap (*Amanita*

phalloides) (below) (DB). Examples were present throughout the various different woodlands.



Some of the other interesting species found are illustrated below. Photos by John Bailey (JB), Doreen Bailey (DB) and Paul Bowyer (PB)

List of Fungi

Basidiomycetes

Agaricus campestris
Agaricus moelleri
Agaricus osecanus
Agaricus porphyrizon
Agrocybe cylindracea
Amanita phalloides
Amanita rubescens
Bjerkandera adusta
Bolbitius titubans
Bovista aestivalis
Calocera cornea
Calocera viscosa
Ceratiomyxa fruticulosa
Chondrostereum purpureum
Clavulina coralloides
Clitopilus prunulus
Crepidotus mollis
Cyathus striatus
Dacrymyces stillatus
Entoloma griseocyaneum
Exidia thuretiana
Geastrum triplex
Gymnopus confluens
Gymnopus dryophilus
Gymnopus peronatus
Hapalopilus rutilans
Hygrocybe conica

Inocybe adaequata
Inocybe asterospora
Inocybe flocculosa
Inocybe maculata
Lacrymaria lacrymabunda
Lepiota cristata
Lycoperdon nigrescens
Lycoperdon perlatum
Lycoperdon pyriforme
Marasmius oreades
Marasmius rotula
Megacollybia platyphylla
Mutinus caninus
Mycena acicula
Mycena pelianthina
Mycena vitilis
Neoboletus (Boletus) luridiformis
Parasola leiocephala
Phallus impudicus
Pluteus ephebeus
Polyporus badius
Postia subcaesia
Russula heterophylla
Scleroderma areolatum
Simocybe centunculus
Stereum hirsutum
Trametes gibbosa

Tricholomopsis rutilans
Xerocomellus chrysenteron
Xerula radicata

Myxomycetes

Enerthenema papillatum
Fuligo septica
Lycogala epidendrum
Tubifera ferruginosa

Ascomycetes

Bulgaria inquinans
Daldinia concentrica
Erysiphe alphitoides
Erysiphe circaeae
Erysiphe heraclei
Neodasyscypha cerina
Peziza micropus
Sarea resinae
Sawadaea bicornis
Xylaria cinerea
Xylaria longipes
Xylaria polymorpha

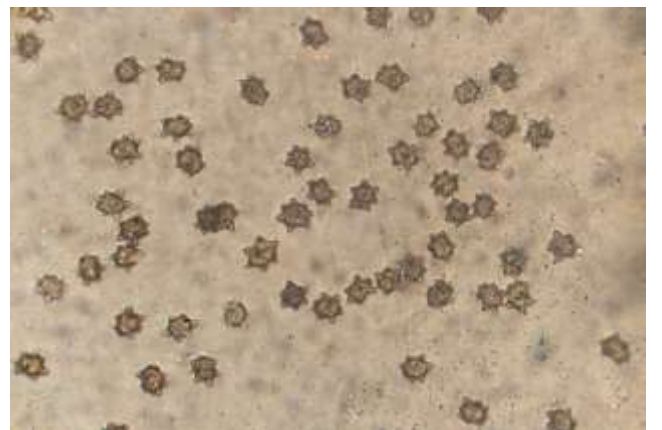
***Enerthenema papillatum* (PB):** a beautiful Myxomycete, < 1mm diameter



***Agrocybe cylindracea* (Poplar Field Cap) (JB)**. in large numbers on and around the roots of a large *Populus x canadensis*



A variety of species (clockwise top left): *Bulgaria inquinans*, *Cyathus striatus*, *Geastrum triplex* and spores of *Inocybe asterospora* – one of the easier *Inocybes* to be identified



***Hygrocybe conica* – the Blackening Waxcap (JB).** The first Waxcap of the season was found near the kitchen garden. Perhaps this is a portent for the Autumn? (JB)



***Mycena pelianthina* (Blackedge Bonnet) (JB).** A grey/purple species which, as the name implies, is easily identified from the dark edge to the gill - see right side of the image



***Megacollybia platyphylla* (Whitelaced Shank) (JB):** a well-structured mushroom, being one of few that are formed with clear obvious rhizomorphs (white laces) at the base of the stipe.



***Pluteus ephebeus* (Sooty Shield) (JB):** a species that caused some confusion when it was found as it had white gills. However, by the end of the morning these had turned pink - a clear pointer to the genus *Pluteus*.



Xylaria cinerea (JB). a series of very young sporophores arising from fissures in a felled tree trunk



Lycoperdon perlatum (Common Puffball) (JB). Present in large numbers throughout the Estate

