

## Tyntesfield Audit 26 March January 2018

Plans for the Audit in February had had to be cancelled because of frozen ground and earlier attempts for March were thwarted by heavy snowfalls. So, we were pleased to be out and about, though hopes for an extensive list of fungi were not high.

Several fungi were worthy of note:

*Neodasyscypha cerina*: new to Tyntesfield, this small greenish ascomycete was found colonising the cut end of felled logs in a large wood pile in Plantation. The same species had been found a few weeks earlier in the Forest of Dean.

*Sarcoscypha austriaca* (Scarlet Elf Cup): a species that used to be very uncommon on the Estate, but for the last two years has been found throughout the woodlands. There seems no obvious explanation for it spreading across the Estate.

*Entoloma vernum*: a search for this unusual (though regular at Tyntesfield) spring Pinkgill in the lower field failed, but a single fruiting body was found under a cedar on the South Lawn.

*Pleurotus ostreatus* (Oyster mushroom): a beautiful example was found amongst felled logs.

Two interesting beetles. Several examples of *Octotemnus glabriculus*, a Ciidae beetle, were found lurking, as small dark shiny lumps in the body of a small bracket of *Trametes pubescens*. This is a very small beetle (1.5mm) and though probably common is rarely recorded. Also present was another new record for Tyntesfield - *Phloeonomus punctipennis*, a "rove" beetle, often found growing under birch bark. Many thanks to Bob Fleetwood for identifying these samples.

### List of Fungi

*Auricularia auricula-judae*  
*Bjerkandera adusta*  
*Byssomerulius corium*  
*Clitocybe fragrans*  
*Clitocybe metachroa*  
*Daldinia concentrica*  
*Entoloma vernum*  
*Flammulina velutipes*

*Gymnopilus penetrans*  
*Neodasyscypha cerina*  
*Panaeolus acuminatus*  
*Pleurotus ostreatus*  
*Ramularia ari*  
*Sarcoscypha austriaca*  
*Trametes pubescens*  
*Trichaptum abietinum*

*Tubaria furfuracea*  
*Xylaria carpophila*

*Octotemnus glabriculus*  
*Phloeonomus punctipennis*

*Neodasyscypha cerina*: a sample scraped for the end of a sawn log.



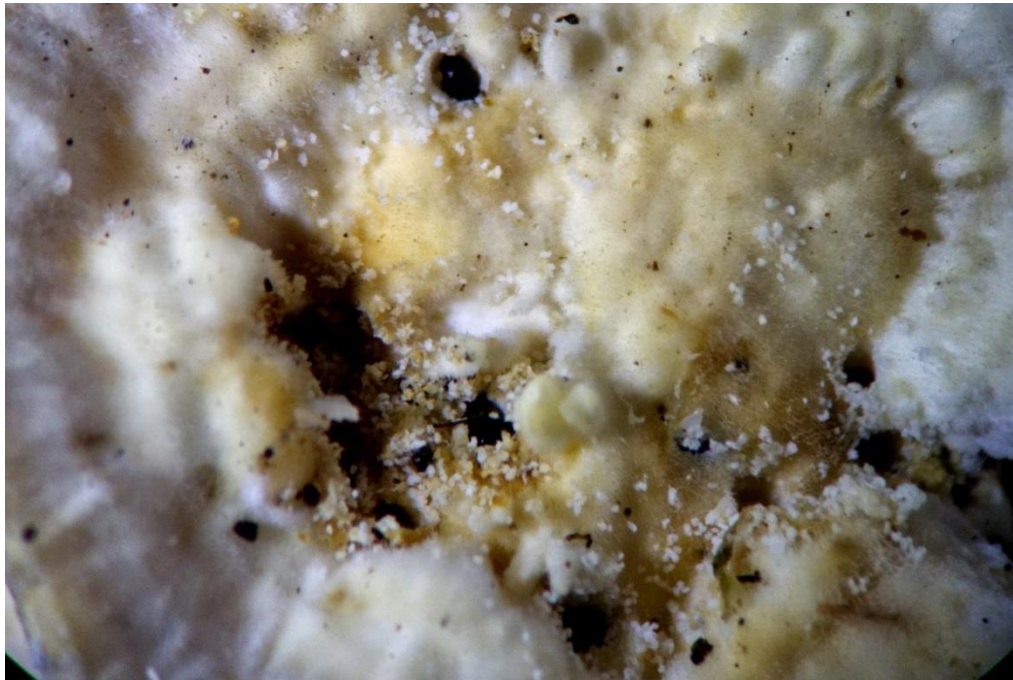
*Sarcoscypha austriaca*: one of many examples seen during the Audit, showing typical damage due to slugs etc.



*Pleurotus ostreatus*: a lovely example growing on the top of a tree stump.



*Octotemnus glabriculus*: a Ciidae beetle embedded in the surface of *Trametes pubescens*



See also:

<http://www.eakingbirds.com/eakingbirds6/insectinfocusoctotemnusglabriculus.htm>