

Tyntesfield Audit 25 January 2018

With the group restored to normal numbers we were pleased to find a wide selection of fungi, though few gilled Basidiomycetes. Interesting species are illustrated below. These include *Byssostilbe stilbigera*, growing on a Myxomycete, *Cordyceps militaris* growing on the remains of an insect pupa, *Merismoides anomalus* on the cut end of a sawn log and *Lepista flaccida*. We also came across a white gilled fungus growing in the lawns. This had a strong mealy smell and resembled The Miller. However, it was correctly identified in the field by Roy as *Tricholomella constricta*. Its identity was readily confirmed by the presence of echinulate spores (see below).

List of Fungi

Auricularia auricula-judae
Baeospora myosura
Bisporella citrina
Bjerkandera adusta
Byssomerulius corium
Byssostilbe stilbigera
Chaetosphaerella phaeostroma
Clavulina rugosa
Clitocybe fragrans
Conocybe fuscimarginata
Conocybe rugosa
Cordyceps militaris
Cribaria argillacea
Cumminsella mirabilissima
Cyathus striatus
Dacrymyces stillatus
Datronia mollis
Exidia glandulosa
Exidia nucleata
Exidia thuretiana

Flammulina velutipes
Fuscoporia ferruginosa
Galerina clavata
Geastrum triplex
Gliophorus psittacinus
Hygrocybe coccinea
Hypholoma fasciculare
Inocybe geophylla
Laccaria laccata
Lepista flaccida
Lepista nuda
Melanotus horizontalis
Merismodes anomalus
Milesina scolopendrii
Mollisia cinerea
Mycena filopes
Mycena galericulata
Mycena tenerrima
Panaeolus acuminatus
Phallus impudicus

Phlebia radiata
Pleurotus cornucopia
Pleurotus ostreatus
Puccinia buxi
Radulomyces molaris
Sarcoscypha austriaca
Schizophyllum commune
Scutellinia scutellata
Sesquicillium buxi
Stereum hirsutum
Trametes gibbosa
Trametes versicolor
Tremella mesenterica
Tricholomella constricta
Tubaria furfuracea
Xylaria carpophila
Xylaria hypoxylon
Xylaria longipes

A glorious yellow mass covering a very rotten log turned out to be a Myxomycete, possibly a species of *Trichia*. Careful examination revealed small white fungi growing from the surface - - *Byssostilbe stilbigera*



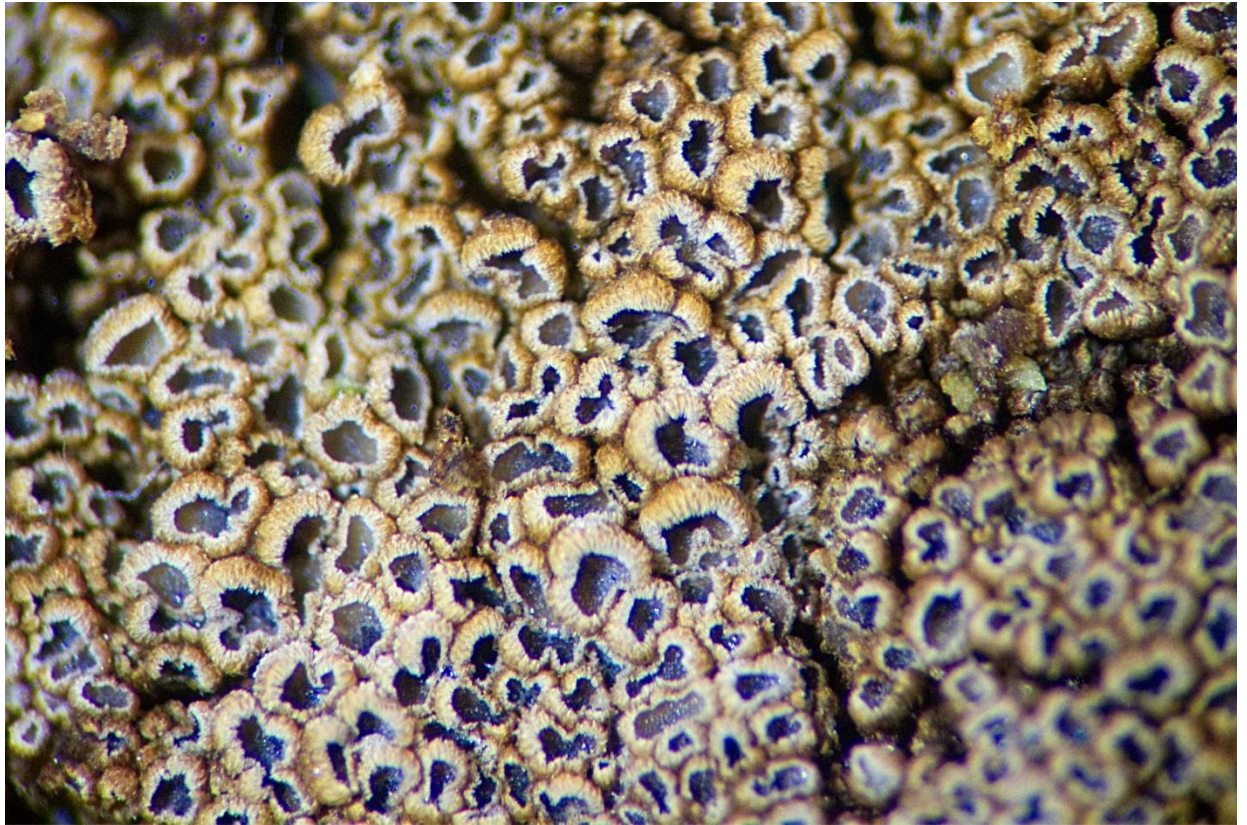
Cordyceps militaris growing in the middle of the South Lawn – easily missed by the many visitors who walk this way



Geastrum triplex (Common Earthstar). A surprisingly large number of these were found in the Plantation woodland



Merismodes anomalus: a Basidiomycete that looks like an Ascomycete but reveals ellipsoid basidiospores under the microscope. Found covering the cut end of a felled tree.



Lepista flaccida growing in grass by the entrance road



Echinulate spores of *Tricholomella constricta* (formerly *Calocybe constricta*)

