

## Tyntesfield Audit March 2017

Five species new to Tyntesfield were an excellent result of a very enjoyable Audit. They included two “little brown jobs” that often go ignored. On this occasion they drew our attention. Firstly, because one was widespread in the old Conifer Plantation, growing in and around old fire sites. The other was found in a pot of Agapanthus in the garden sales area. Both turned out to be unusual species of *Galerina* – *G. ampullaceocystis* and *G. nana*. See below for full details of their identification.

The other new species (*Asteromassaria macrospora*, *Merismodes anomala* and *Nectria arenula*) were highlighted by Nicola – all common, but rarely recorded species growing on twigs or dead stems.

The Scarlet Elf Cups (*Sarcoscypha austriaca*) continued to thrive, but the strange year was emphasised by them being accompanied by *Calocybe gambosa* (St George’s Mushroom), which is normally not found until well into April. It was also good to see the spring Entoloma – *E. vernum*, growing in several sites on the South Lawns and near the Stables, especially since it was absent from its previous main habitat, Tyntesfield Park Field, which had been subject to “improvement” a few months ago. *Entoloma vernum*, like the waxcap fungi, is an excellent indicator of unimproved grasslands, but soon disappears when their habitat is disturbed.

### Photographs – Top Left, clockwise:

*Calloria neglecta*, a small orange Ascomycete growing on dead stems of Nettle

*Entoloma vernum*, a spring Pink Gill typically growing in unimproved grass

*Mollisia ligni*, a small Ascomycete cup fungus growing on dead nettle stems

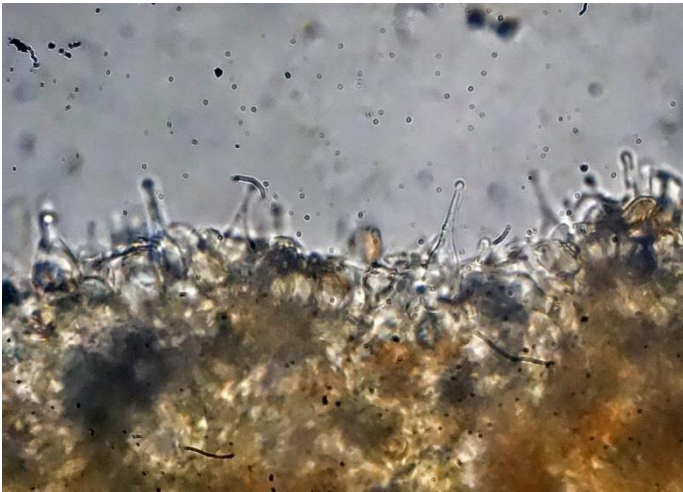
*Merismodes anomala*, a small cup shaped Basidiomycete found on cut ends of beech logs. Common, but previously ignored!



### Identification of two unusual “Little Brown Jobs”

Both species were typical Galerinas, but were unusual in having two spored basidia and several other interesting features:

*Galerina ampullaceocystis* (see below). Numerous tibiform cystidia, some with very small heads, clamps present and spores approximately 10 $\mu$ .



*Galerina nana* (see below). Numerous cystidia with metuloids, verruculose spores and two spored basidia



**Complete List of Species** (Species new to Tyntesfield are marked in red)

*Ascodichaena rugosa*  
*Asteromassaria macrospora*  
*Auricularia auricula-judae*  
*Bjerkandera adusta*  
*Bolbitius titubans*  
*Byssomerulius corium*  
*Calloria neglecta*  
*Calocybe gambosa*  
*Chaetosphaerella phaeostroma*  
*Chondrostereum purpureum*  
*Clitocybe fragrans*  
*Coprinellus micaceus*  
*Dacrymyces stillatus*  
*Daldinia concentrica*  
*Entoloma conferendum*  
*Entoloma vernum*  
*Exidia nucleata*  
*Galerina ampullaceocystis*  
*Galerina clavata*

*Galerina marginata*  
*Galerina nana*  
*Ganoderma australe*  
*Hohenbuehelia atrocaerulea*  
*Hymenochaete rubiginosa*  
*Hypholoma fasciculare*  
*Hypoxylon fragiforme*  
*Inocybe geophylla*  
*Leptosphaeria acuta*  
*Melanoleuca albifolia*  
*Merismodes anomala*  
*Milesina scolopendrii*  
*Mollisia ligni*  
*Nectria arenula*  
*Nectria episphaeria*  
*Panaeolus acuminatus*  
*Panaeolus fimicola*  
*Peziza repanda*  
*Phacidium multivalve*

*Phallus impudicus*  
*Pholiota highlandensis*  
*Pholiotina rugosa*  
*Pleurotus ostreatus*  
*Pluteus cervinus*  
*Polyporus brumalis*  
*Psathyrella spadiceogrisea*  
*Ramularia ari*  
*Rickenella swartzii*  
*Sarcoscypha austriaca*  
*Schizophyllum commune*  
*Scutellinia scutellata*  
*Stereum hirsutum*  
*Strobilurus tenacellus*  
*Trametes versicolor*  
*Tremella mesenterica*  
*Trochila ilicina*  
*Xylaria carpophila*